

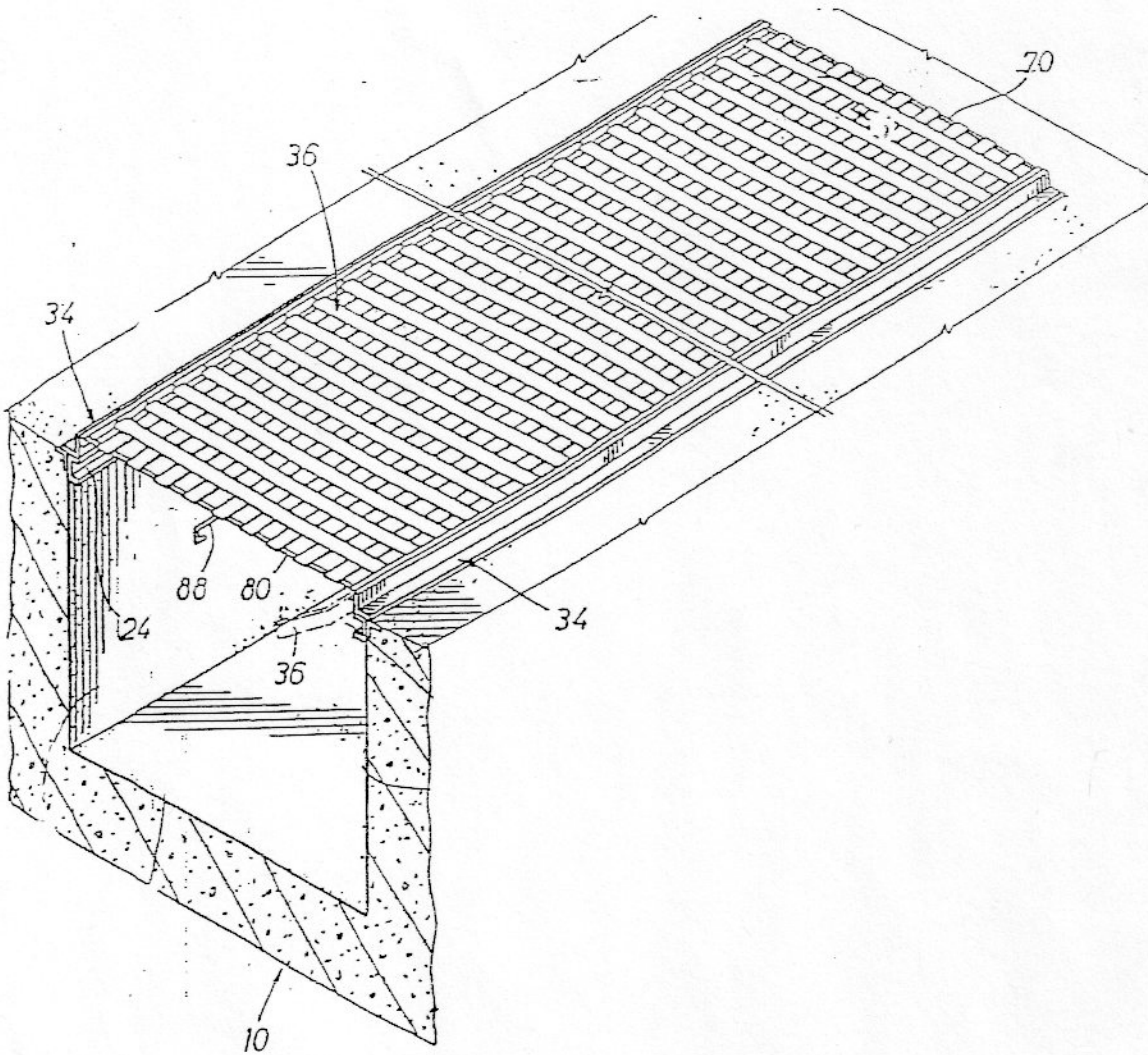
Pit Bull Safety Cover

Webbing Certification Test Report

<u>TEST METHOD</u>	<u>TEST RESULTS</u>
Breaking Strength	High – 7,300 lbs. Low – 6,900 lbs.
Width Variance	1.80” – 2.00”
Thickness	.043” - .050”
Weight	11.9 lbs. per 100 yards
Elongation	Min 8% Max 14%
Crocking	Wet 5.0 Dry 5.0
Dye Stability	Excellent
Migration	None
Corrosion	None
Flammability	Self-Extinguishing

FIG. 1

Top view of installed Pit Cover



#10 refers to diamond plate (locking mechanism is welded to the underneath side)

#24 owner drain pan rails

#34 refers to owner supplied tire guide system

#36 refers to the pit cover webbing – supplied by BRW

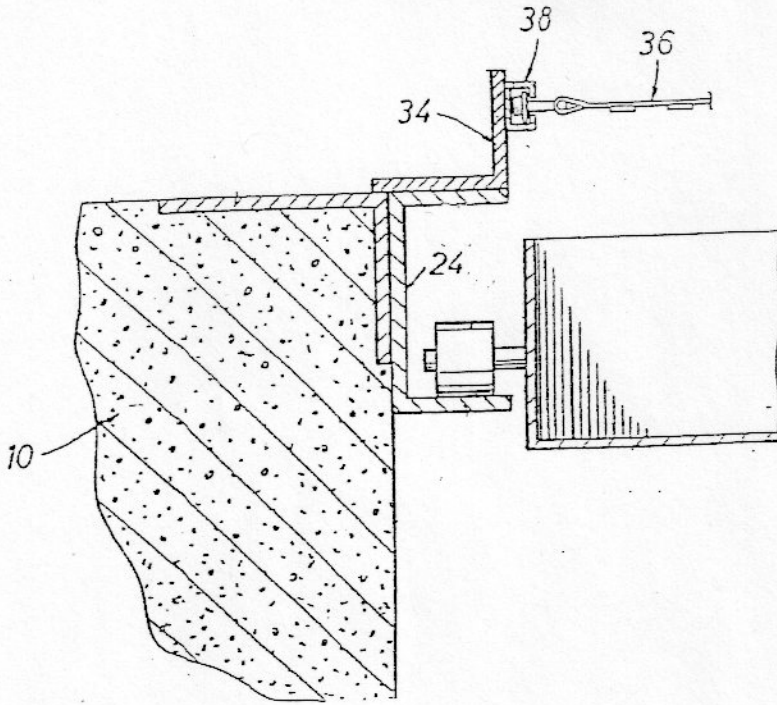
#70 refers to the active/passive adapters – supplied by BRW

#80 refers to passive/active bars – supplied by BRW

#88 refers to pit cover hook – supplied by BRW

FIG. 2

Side view of installed Sliding Channel
(how it should be positioned in accordance
with owners drain pan system)



#10 refers to diamond plate
(locking mechanism is
welded to the underneath
side)

#24 owner drain pan rails

#34 refers to owner supplied tire
guide system

#36 refers to the pit cover webbing
supplied by BRW

#38 refers to sliding channel
supplied by BRW

#70 refers to the active/passive
adapters – supplied by BRW

#74 refers to hardware that bolts to
pit cover – supplied by BRW

#77 refers to pin holes needed to
be drilled by installer

#78 refers to pins – supplied by BRW

#80 refers to active/passive bars
supplied by BRW

#88 refers to pit cover hook
supplied by BRW

#90 – 102 refers to locking mechanism
supplied by BRW

FIG. 5

Side view of how the Pit Cover Webbing is
wrapped and bolted around the active/passive
bars and adapters

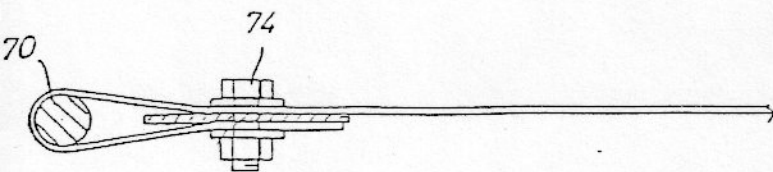
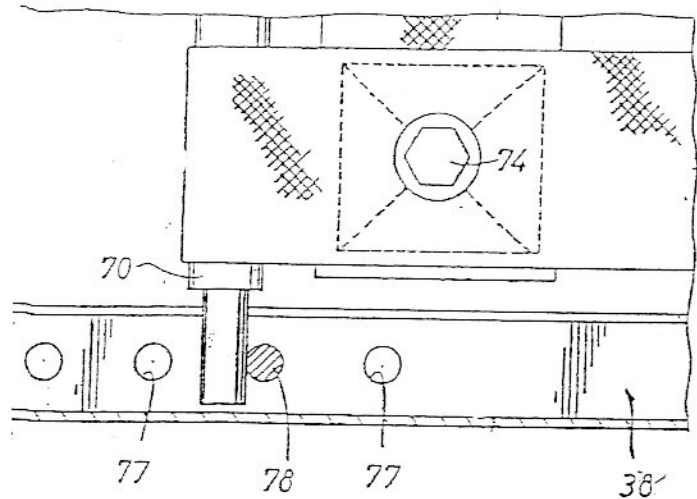


FIG. 6

Is an "open" top view of the Sliding Channel showing how to pin the passive bar in place



#10 refers to diamond plate (locking mechanism is welded to the underneath side)

#24 owner drain pan rails

#34 refers to owner supplied tire guide system

#36 refers to the pit cover webbing supplied by BRW

#38 refers to sliding channel supplied by BRW

#70 refers to the active/passive adapters – supplied by BRW

#74 refers to hardware that bolts to pit cover – supplied by BRW

#77 refers to pin holes needed to be drilled by installer

#78 refers to pins – supplied by BRW

#80 refers to active/passive bars supplied by BRW

#88 refers to pit cover hook supplied by BRW

#90 – 102 refers to locking mechanism supplied by BRW

FIG. 7

View of where to weld the Locking Mechanism and how it should be connected to the hook.

